



DECORATIVE COATING



FINISHING MATERIALS FOR FACADES

PRIMERS
AND PLASTERS

Quartz primer

Primer A-100



ADVANTAGES

- Can be used for acrylic, silicone and mineral plasters.
- Decorative rough effect.
- Hides surface defects.

Ready-to-use primer mixture based on acrylic dispersion, silicone resins and potassium glass with the addition of fillers, appropriate stabilizers and hydrophobic agents. The composition is intended for the final preparation of surfaces before applying mineral, acrylic and silicone plasters. Creates a durable coating with high resistance to aggressive environment and atmospheric influences. Dilutes by 15% water.



Scope of use:

Designed for processing any what are the building bases, such as mineral surfaces, plasterboard plates, smooth surfaces. It can also be used in insulation systems and on mineral wool. It is used for internal and external works. It is produced in white, at the request of the client it is painted in the colors of the palette.

Surface preparation:

The treated surface must be dry, cleaned of grease, dirt and lagging particles.

Applying:

Mix thoroughly before application. Apply the solution with a brush or roller. In the case of application of colored plaster, the primer layer should be applied in the same color.



Usage	
Binding agent	Acrylic dispersion
Density	1,75 kg/L
Drying time, 23°C 50% RH	2-12 hr
Consumption	0,3 kg/m ²
Thinner	Water
Working tools	
Cleaning working tools	Water
Storage	3 years t > 5°C
Packaging	10 L/ 16 kg

Attention: On traditional cement, cement-lime, concrete surfaces, silicate primer can be applied after 14 days of natural drying of the base, and on thin-layer primer mass can be applied after 3 days. Work should not be carried out during precipitation or in strong winds. During external work, the surface should be protected from direct sunlight. The minimum temperature during work should not fall below +6°C, and the temperature at night should not be lower than 0°C. A strong alkaline reaction can form irreversible discoloration on glass, ceramic, resin, wood, metal and stone surfaces. The eyes and skin should be protected while working by using gloves and safety glasses.

Quartz structural primert

Quartz Base



ADVANTAGES

- Can be used as an independent coating.
- Decorative rough effect.
- Hides surface defects.

Polymer dispersion of acrylate resins with the addition of alkali-resistant quartz sand. The presence of this sand ensures reliable adhesion of the primed surface to all subsequent coatings. It can be used as an independent coating, because after drying it forms a stable, moisture-resistant layer of white color with a decorative «rough» effect. It can be colored in a wide range of colors.



Scope of use:

The material is designed to create a rough base before applying finishing coatings to traditional bases, primarily smooth concrete, as well as plasterboard, plaster blocks, brickwork, and others. For example, cement, gypsum, decorative plasters, putties, structural paints can be used as finishing materials.

Surface preparation:

The base must be cleaned in advance of brittle formations, exfoliations, dust and oil stains. Old flimsy, usually adhesive or chalk coatings, must be completely removed.

Applying:

The mixture is ready for use. The primer should be thoroughly mixed before use. Depending on the absorption of the base, up to 10% water can be added. The Mixon Quartz base is applied with a brush, roller or poppy seed in one layer. The base temperature should be at least +5°C. Frozen surfaces cannot be primed. During operation, the primer must be mixed. Applying putties, plasters and other materials to the primed surface is carried out only after the primer has completely dried – after 3-4 hours.



Usage	
Binding agent	Acrylic copolymer latex
Density	1,53 kg/L
Drying time, 23°C 50% RH	3-4 hr
Consumption	3-4 kg/m ²
Thinner	Water
Working tools	
Cleaning working tools	Water
Bases	WO
Storage	2 years t > 0°C
Packaging	10 L

Acrylic-latex structural paint

Exterior M



ADVANTAGES

- Hides surface defects can be used without first puttingtying the walls.
- Decorative rough effect.
- Seals holes and joints in the surface.

Structural basic facade paint for processing new and previously painted mineral surfaces during external and internal work. First of all, it is intended for painting facades and plinths of residential buildings, public and industrial buildings. The use of structural paint will help seal holes in the surface of lightweight concrete and joints, reducing the danger of cold damage.



Scope of use:

The paint is suitable for painting concrete and light concrete surfaces, as well as a highly associated plastered surface.

Surface preparation:

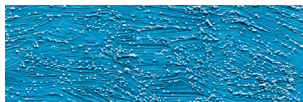
The painted surface must be dry and cleaned of dust, dirt, grease and lagging particles. Depending on the type of contamination, choose the appropriate method of surface cleaning. Avoid using cleaning methods that can damage the base surface. Remove the old lagging paint from the surface. Clean the porous, loosely connected or ground surface to a strong base, scrape the cracks to clean and repair. Make sure that the new plastered surface is dry and finally carbonated (minimum 28 days).

Priming:

Strongly associated non-porous base surfaces do not require separate priming. The porous surface must first be primed with primer for the facade surfaces of the Mixon Aq-uastop F, diluting it with water in a ratio of 1:7. To avoid stains, it is recommended to prime 2-3 times. Before painting, the surface must be completely dry.

Applying:

Exterior M apply to the base surface with a plasterer, roller or spatula. Then give the treated surface the desired structure, using various working tools for this: structural roller, ring brush, sponge, spatula, etc. Apply structural paint to the surface in one or two layers. When applied in two layers, the treated surface will be smoother.



Usage	
Binding agent	Copolymer latex
Dry residue	48 %
Density	1,53 kg/L
Drying time, 23°C 50% RH	1-2 hr
Can be repainted at 23°C 50% RH	2 hr
Consumption	2 m ² /L
Thinner	Water
Working tools	
Cleaning working tools	Water
Bases	WO, CLR
Storage	2 years t > 5°C
Packaging	10 L

Acrylic plaster

Bark beetle A-100



ADVANTAGES

- Grain: 2 mm and 3 mm.
- It is colored in a wide range of colors.
- It is used in thermal insulation systems by the «wet-light» method.

Ready-to-work aqueous dispersion of acrylic resin and quartz. As a result of the application, a structural surface of bark beetles with a grain size of 2 mm or 3 mm is obtained. Plaster is resistant to atmospheric and mechanical influences. It has good elasticity and water-repellent properties.

**Scope:**

It is intended for decorative and protective thin-layer coating in thermal insulation systems by the «light-wet» method using polystyrene foam. Eventually, the so-called «bark beetle structure» is formed with a grain size of 2 mm, 3 mm. It is used on concrete, brick and plastered bases, as well as in thermal insulation systems of facades and on mineral wool during internal and external works.

Surface preparation:

The treated surface must be dry, cleaned of grease, dirt and lagging particles.

Priming:

The surface must be primed with an acrylic-silicone primer Mixon A100.

Applying:

Mix thoroughly before application. A small amount of water (0.1 L per bucket) can be added as needed. Gradually apply to the base with a steel grater at an angle of 60° to the surface. The thickness of the applied layer should correspond to the size of the aggregate grains. After the applied coating stops sticking to the tool, it is possible to form the structure of the plaster surface with a plastic grater. Depending on the time, intensity and trajectory of the grater, horizontal, vertical, circular or cross indentations can be obtained.



Usage	
Binding agent	Acrylic resin
Density	1,75 kg/L
Color	White
Application temperature	min. +5°C max. +25°C
Drying time, 23°C 50% RH	6-24 hr
Consumption	2.0 mm - 3 kg/m ² 3.0 mm - 4 kg/m ²
Thinner	Water
Working tools	
Cleaning working tools	Water
Bases	A, C
Storage	2 years t > 0°C
Packaging	10 L/ 16 kg

Attention: Protect from direct sunlight, wind and rain until it dries completely. Apply plaster to cement, cement-lime, concrete bases after 28 days of natural drying of the base.

Acrylic plaster

Lamb A-105



ADVANTAGES

- Grain: 1.5 mm and 2.5 mm.
- It is colored in a wide range of colors.
- It is used in thermal insulation systems by the «wet-light» method.

Ready-to-use water-soluble decorative plaster based on acrylic dispersion and quartz. The result of the application is the structural surface of «lambs» with a grain size of 1.5 mm or 2.5 mm. Plaster is resistant to atmospheric and mechanical influences. It has good elasticity and water-repellent properties.

**Scope:**

It is intended for decorative thin-layer surface decoration on concrete, brick and plastered bases, as well as in thermal insulation systems of facades. It is used for internal and external works. It is produced in white, at the request of the client it is painted in the colors of the palette.

Surface preparation:

The surface to be treated must be dry, free of grease, contaminants and lagging particles.

Priming:

The surface must be primed with an acrylic-silicone primer Mixon A100.

Applying:

Mix thoroughly before application. A small amount of water (0.1 L per bucket) can be added as needed. Gradually apply to the base with a steel grater at an angle of 60° to the surface. The thickness of the applied layer should correspond to the size of the aggregate grains. After the applied coating stops sticking to the tool, it is possible to form the structure of the plaster surface with a plastic grater. The homogeneous texture of the surface in the form of tightly laid crumb grains is formed by circular movements of the plastic grater. At the same time, the grater is kept parallel to the treated surface.

Attention: Protect from direct sunlight, wind and rain until it dries completely. Apply plaster to cement, cement-lime, concrete bases after 28 days of natural drying of the base. Attention: Protect from direct sunlight, wind and rain until it dries completely. Apply plaster to cement, cement-lime, concrete bases after 28 days of natural drying of the base.



Usage	
Binding agent	Acrylic resin
Density	1,75 kg/L
Color	White
Application temperature	min. +5°C max. +25°C
Drying time, 23°C 50% RH	6-24 hr
Consumption	1.5 mm - 3 kg/m ² 2.5 mm - 4 kg/m ²
Thinner	Water
Working tools	
Cleaning working tools	Water
Bases	A, C
Storage	2 years t > 0°C
Packaging	10 L/ 16 kg

Silicone plaster

Bark beetle A-100 Sil



ADVANTAGES

- Grain: 2 mm and 3 mm.
- It is colored in a wide range of colors.
- Creates a vapor-gas-permeable coating capable of self-cleaning.

Finished plaster based on dispersions of organic binders and silicone resins. As a result of the application, a structural surface of bark beetles with a grain size of 2 mm or 3 mm is obtained. Plaster is resistant to atmospheric and mechanical influences. It has good elasticity and water-repellent properties. Creates a vapor and gas-permeable, hydrophobic coating that has the ability to self-clean.

**Scope:**

It is intended for decorative thin-layer surface decoration on concrete, brick and plastered bases, as well as in thermal insulation systems of facades and on mineral wool. It is used for internal and external works.

Surface preparation:

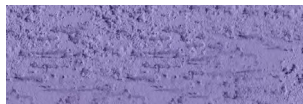
The treated surface must be dry, cleaned of grease, dirt and lagging particles.

Priming:

The surface must be primed with an acrylic-silicone primer Mixon A100.

Applying:

Mix thoroughly before application. A small amount of water (0.1 L per bucket) can be added as needed. Gradually apply to the base with a steel grater at an angle of 60° to the surface. The thickness of the applied layer should correspond to the size of the aggregate grains. After the applied coating stops sticking to the tool, it is possible to form the structure of the plaster surface with a plastic grater. Depending on the time, intensity and trajectory of the grater, horizontal, vertical, circular and cross recesses can be obtained.



Usage	
Binding agent	Silicone resin
Density	1,75 kg/L
Color	White
Application temperature	min. +5°C max. +25°C
Drying time, 23°C 50% RH	6-24 hr
Consumption	2.0 mm - 3 kg/m ² 3.0 mm - 4 kg/m ²
Thinner	Water
Working tools	
Cleaning working tools	Water
Bases	A, C
Storage	2 years t > 0°C
Packaging	10 L/ 16 kg

Attention: Protect from direct sunlight, wind and rain until it dries completely. Apply plaster to cement, cement-lime, concrete bases after 28 days of natural drying of the base.
Attention: Protect from direct sunlight, wind and rain until it dries completely. Apply plaster to cement, cement-lime, concrete bases after 28 days of natural drying of the base.

Silicone plaster

Lamb A-105 Sil



ADVANTAGES

- Grain: 1.5 mm and 2.5 mm.
- It is colored in a wide range of colors.
- Creates a vapor-permeable gas-permeable coating.

Ready-to-work aqueous dispersion of organic binders and silicone resins. The result of the application is the structural surface of «lamb» with a grain size of 1.5 mm or 2.5 mm. Plaster is resistant to atmospheric and mechanical influences. It has good elasticity and water-repellent properties. Creates a vapor and gas-permeable, hydrophobic coating that has the ability to self-clean.

**Scope:**

It is intended for decorative thin-layer surface decoration on concrete, brick and plastered bases, as well as in thermal insulation systems of facades and on mineral wool. It is used for internal and external works.

Surface preparation:

The surface to be treated must be dry, free of grease, contaminants and lagging particles.

Priming:

The surface must be primed with an acrylic-silicone primer Mixon A100.

Applying:

Mix thoroughly before application. A small amount of water (0.1 L per bucket) can be added as needed. Gradually apply to the base with a steel grater at an angle of 60° to the surface. The thickness of the applied layer should correspond to the size of the aggregate grains. After the applied coating stops sticking to the tool, it is possible to form the structure of the plaster surface with a plastic grater. The homogeneous texture of the surface in the form of tightly laid crumb grains is formed by circular movements of the plastic grater. At the same time, the grater is kept parallel to the treated surface.



Usage	
Binding agent	Silicone resin
Density	1,75 kg/L
Color	White
Application temperature	min. +5°C max. +25°C
Drying time, 23°C 50% RH	6-24 hr
Consumption	1.5 mm - 3 kg/m ² 2.5 mm - 4 kg/m ²
Thinner	Water
Working tools	
Cleaning working tools	Water
Bases	A, C
Storage	2 years t > 0°C
Packaging	10 L/ 16 kg

Attention: Protect from direct sunlight, wind and rain until it dries completely. Apply plaster to cement, cement-lime, concrete bases after 28 days of natural drying of the base.
Attention: Protect from direct sunlight, wind and rain until it dries completely. Apply plaster to cement, cement-lime, concrete bases after 28 days of natural drying of the base.

Mineral plaster

Bark beetle M-100



ADVANTAGES

- Grain: 2 mm and 3 mm.
- It is colored in a wide range of colors.
- Color: White and Extra white

Plaster solution for external and internal use, designed for finishing walls and ceilings with noble plaster with a quartz structure «Bark beetle». Plaster is a material based on dolomite crumb with grain sizes: 2.0 mm, 2.5 mm, 3.5 mm. The solution contains hydrophobic substances that limit water absorption.



Scope:

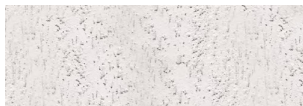
Thin-layer plaster is used as the last layer. It can also be used in the after-insulation system and for mineral wool. Provides alignment of small irregularities of the surface being treated. Plaster coatings can be painted with Mixon paint of any color.

Surface preparation:

Plaster is characterized by good adhesion to the surfaces of any building materials. Surface preparation consists in cleaning from dust and grease, cleaning from old paint and plaster coatings. A Mixon A100 primer should be used before applying plaster to any surface.

Preparation of the mixture:

Pour the dry mixture into clean water and stir until a homogeneous mass is formed (kneading ratio: 5 liters of water per 25 kg of the mixture). After 10 minutes, the solution can be applied to the surface. The finished solution retains its properties for 1 hour. Plastering work is performed at temperatures from +5°C to +25°C. In the process of work, it is necessary to constantly mix the solution to maintain a uniform consistency. To avoid visible joints, plaster must be applied without interruption until the wall «is completely covered from edge to edge». It is applied to the surface with a stainless steel grater, then the desired texture is created with a plastic grater. After finishing work, the tools must be washed with water.



Usage	
Binding agent	Dolomite crumb
Density	1,80 kg/L
Color	White Extra white
Application temperature	Мін. +5°C Макс. +25°C
Drying time, 23°C 50% RH	6-24 hr
Consumption	2.0 mm - 3 kg/m ² 2.5 mm - 3.5 kg/m ² 3.5 mm - 4.0 kg/m ²
Thinner	Water
Working tools	
Cleaning working tools	Water
Bases	A, C
Storage	2 years t > 0°C
Packaging	25 kg

Attention: Protect from direct sunlight, wind and rain until it dries completely. Apply plaster to cement, cement-lime, concrete bases after 28 days of natural drying of the base.

Mineral plaster

Lamb M-105



ADVANTAGES

- Grain: 1.5 mm and 2.5 mm.
- It is colored in a wide range of colors.
- Color: White and Extra white

Plaster solution for external and internal use, intended for finishing walls and ceilings with noble plaster with a quartz structure «lamb». Plaster is a dolomite crumb-based material with grain sizes: 1.5 mm, 2.0 mm, 2.5 mm. The solution contains hydrophobic substances that limit water absorption.



Scope:

Thin-layer plaster is used as the last layer. It can also be used in the after-insulation system and for mineral wool. Provides alignment of small irregularities of the surface being treated. Plaster coatings can be painted with Mixon paint of any color.

Surface preparation:

The surface to be treated must be dry, free of grease, contaminants and lagging particles.

Preparation of the mixture:

Pour the dry mixture into clean water and stir until a homogeneous mass is formed (kneading ratio: 5 liters of water per 25 kg of the mixture). After 10 minutes, the solution can be applied to the surface. The finished solution retains its properties for 1 hour. Plastering work is performed at temperatures from +5°C to +25°C. In the process of work, it is necessary to constantly mix the solution of maintaining a uniform consistency. To avoid visible joints, plaster must be applied without interruption until the wall «is completely covered from edge to edge».



Usage	
Binding agent	Dolomite crumb
Density	1,96 kg/L
Color	White Extra white
Application temperature	мін. +5°C макс. +25°C
Drying time, 23°C 50% RH	6-24 hr
Consumption	1.5 mm - 3 kg/m ² 2.0 mm - 3,5 kg/m ² 2.5 mm - 4 kg/m ²
Thinner	Water
Working tools	
Cleaning working tools	Water
Bases	A, C
Storage	2 years t > 0°C
Packaging	25 kg

Attention: Protect from direct sunlight, wind and rain until it dries completely. Apply plaster to cement, cement-lime, concrete bases after 28 days of natural drying of the base.